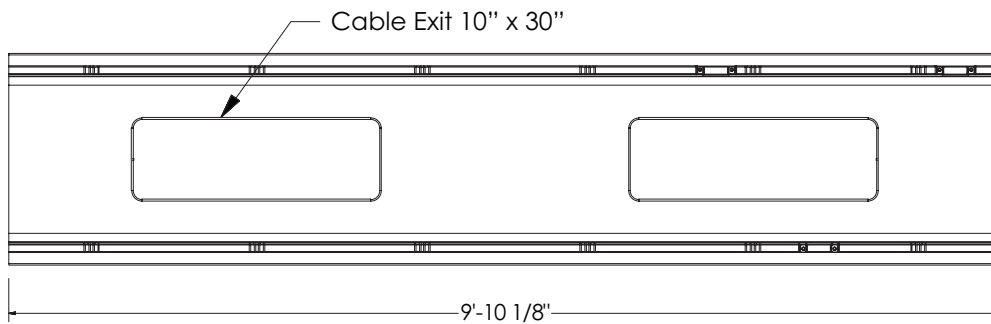


Plastibeton Cover

128 lbs

32,000 lb Axle Load

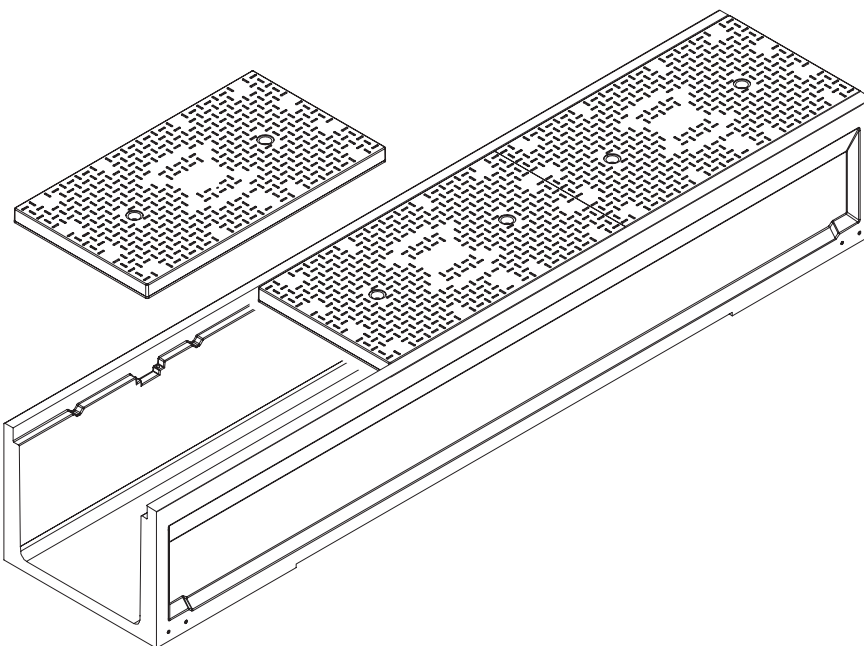
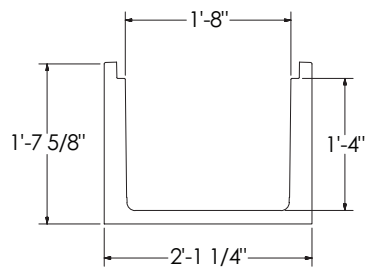


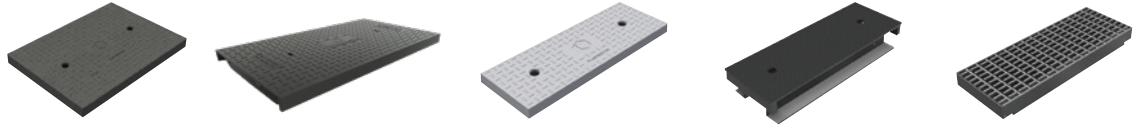
T2016 Trench

High Density Polymer
Concrete

1030 lbs

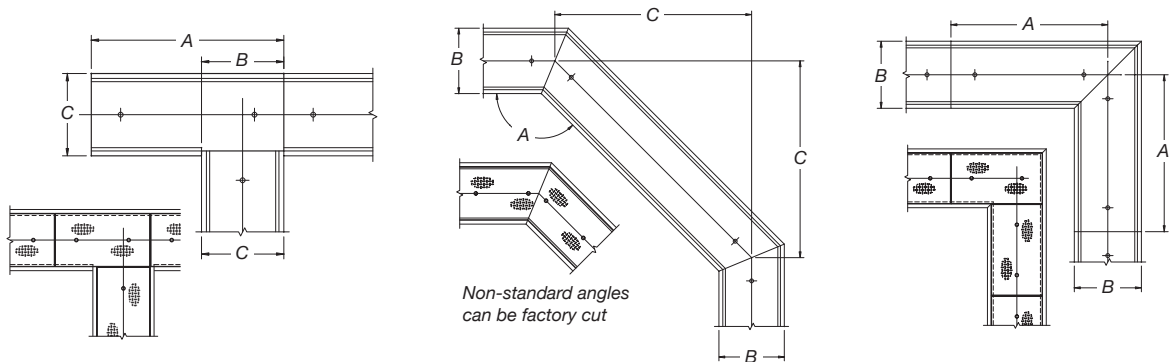
Solid Bottom Available





Options

Available Covers: • Plastibeton • Plastibeton ULW • Plastibeton HD • Steel • Grated Steel



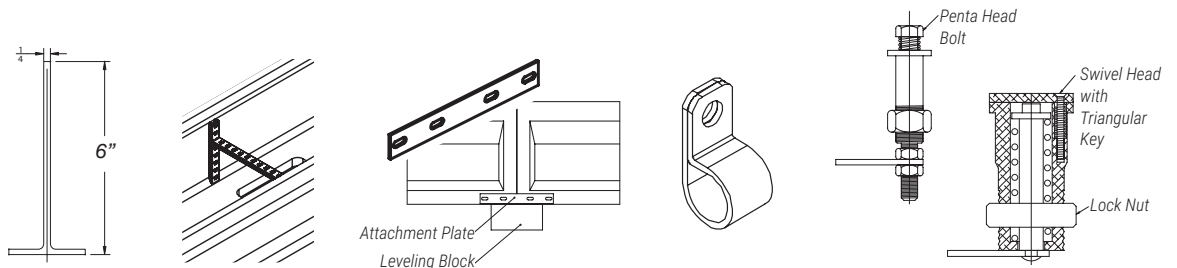
A	B	C
4'-11 1/16"	2'-1 1/2"	2'-1 1/4"

A	B	C
135°	2'-1 1/4"	3'-2"

A	B
4'-11 1/16"	2'-1 1/4"

Ring and Cover:
Custom configurations
are available

• "T" Connection • Horizontal Deviation • Right Angle



Add On Options

• Cable Divider • Unistrut • Attachment Plate • Cable Clips
- Galvanized
- Stainless
- Plastic • Locking
- Triangular Key
- Penta Bolt

WARNING: Cancer - www.P65Warnings.ca.gov

All information contained on this sheet is current at the time of publication.
Oldcastle reserves the right to discontinue or update product information without notice.

Revision 10/04/23

© 2023 Oldcastle Infrastructure, Inc.