



STRATA GREASE INTERCEPTOR

1500 Gallon capacity

TOP
No. STRATA-TOP
5,140 lbs.

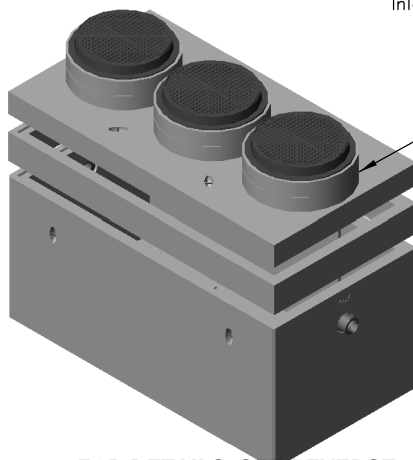
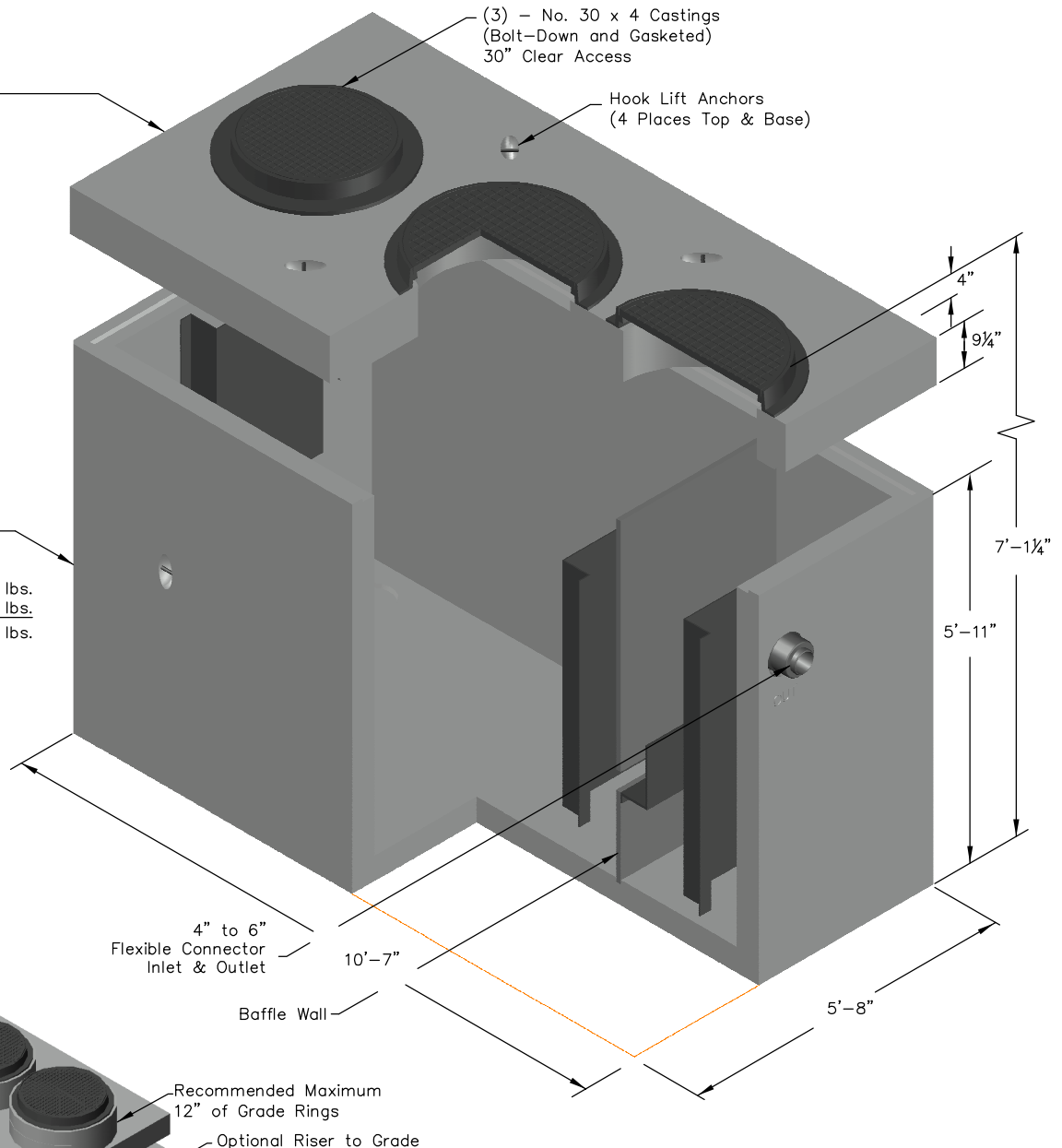
(3) — No. 30 x 4 Castings
(Bolt-Down and Gasketed)
30" Clear Access

Hook Lift Anchors
(4 Places Top & Base)

BASE ASSEMBLY
No. STRATA-B-1500

15,035 lbs.

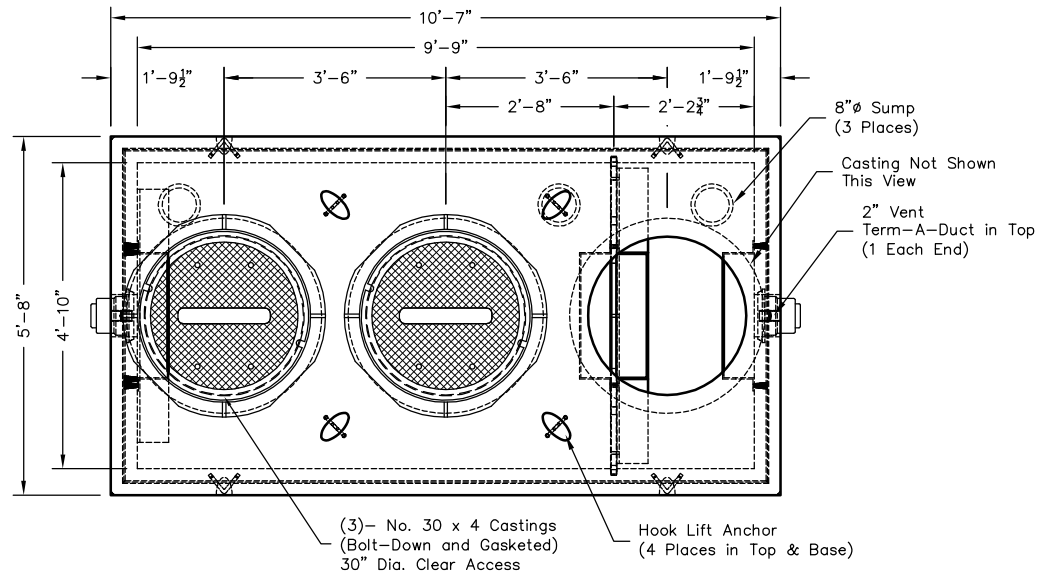
Base	15,035 lbs.
Baffle Wall	140 lbs.
Total	15,175 lbs.



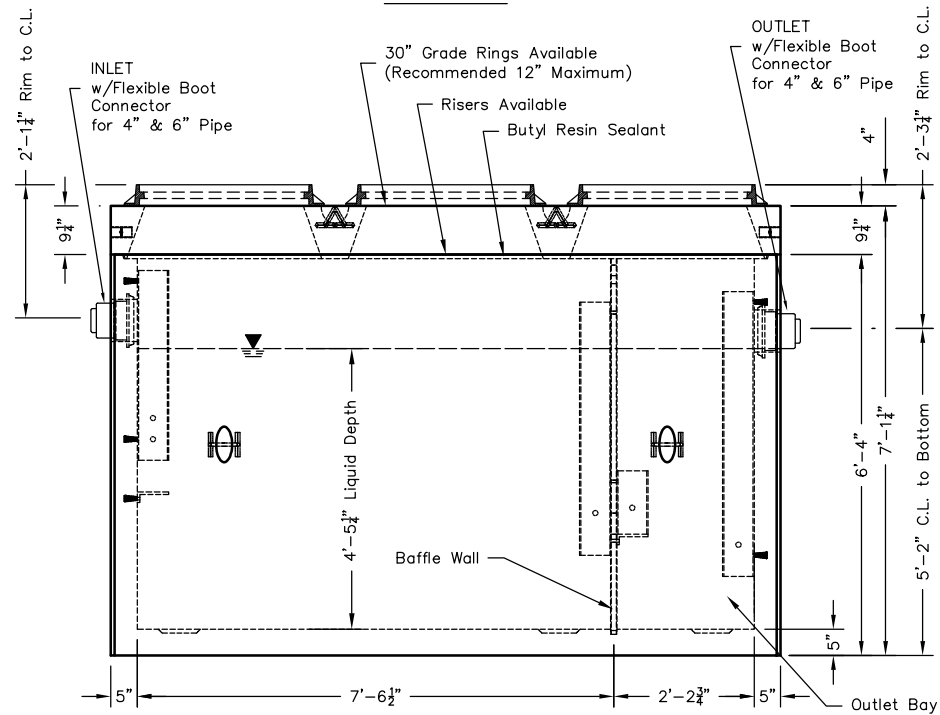
"IAPMO Listed"

FOR DETAILS, SEE REVERSE>>

Items Shown Are Subject To Change Without Notice
Issue Date: April 2016



PLAN VIEW



SIDE VIEW

Grease Interceptor:

- Designed in accordance with IAPMO/ANSI Z1001, Manufactured per ASTM C1613
- Loading per ASTM C890 for AASHTO HS20-44 vehicle loading and maximum soil cover of 5'-0"
- Maximum allowable DFUs (Drainage Fixture Units) = 172 (equivalent to 1,500 gallon size)
- Corrosion resistant coating/liner available to extend the life of the tank.

Manufacturer's recommendations:

- Fill lift anchor pockets with grout.
- Ventilate each end to open atmosphere.
- Prior to "Start Up" of System, fill with clean water through inlet bay to bottom of flow channel (approx. one foot deep).
- Follow Regular Inspection, Cleaning, & Maintenance Schedule (See Clean Out & Maintenance Instructions).