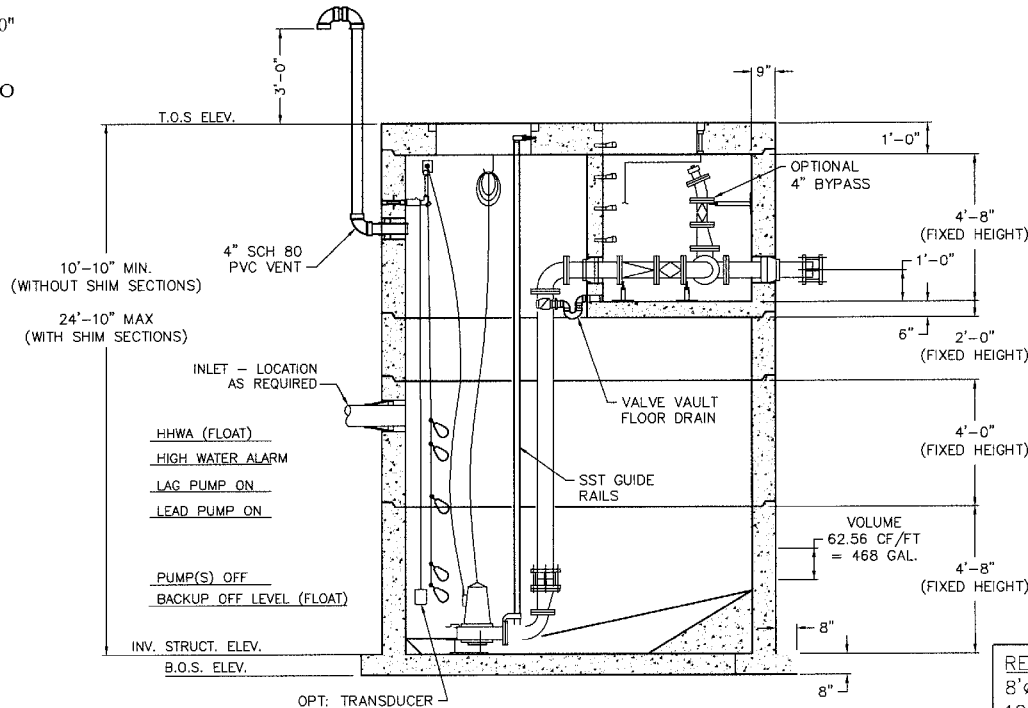


OPTION LIST:

- OVERALL STRUCTURE HEIGHT FROM 10'-10" TO 24'-10" (USING STANDARD HEIGHT STRUCTURAL COMPONENTS)
- 2' & 4' VALVE VAULT EXTENSION RISERS TO INCREASE HEADROOM OR FORCE MAIN COVER WHEN REQUIRED
- H2O LOAD RATING ON HATCHES
- SAFETY GRATING FOR VALVE VAULT HATCH
- LADDER EXTENSION FOR VALVE VAULT ACCESS
- ADMIXTURE FOR HYDROGEN SULFIDE PROTECTION
- NON-FIBRATED EXTERIOR DAMPPROOFING
- DISCHARGE PIPING & VALVES SIZE 2"-6"
- PIPING MATERIALS (PVC OR DI)
- DISCHARGE POSITION #1, #2 (STD) OR #3
- BYPASS OUTLET/INLET WITH ISOLATION VALVE AND QUICK CONNECT (2"-4")
- DISCHARGE PRESSURE GAUGES
- VENTING WITH ODOR CONTROL
- CONTROL PANEL PLACEMENT
- TRANSDUCER/FLOAT LEVEL CONTROL
- INTERIOR/EXTERIOR JUNCTION BOXES
- ALUMINUM & STAINLESS TRASH BASKETS
- STAINLESS PORTABLE HOIST (300#, 1000#)

SEE COMPLETE LISTING AND OPTION DESCRIPTIONS IN THE ONELIFT SPECIFICATION GUIDE



*INTERIOR ELEVATION VIEW
RC611 x 10'-10" to 24'-10"*

APPROX. WEIGHTS:

- TOP SLAB = 5 TONS**
- VALVE VAULT = 12 TONS**
- **USUALLY TOP SLAB & VALVE VAULT ARE FACTORY SEALED, AND SHIP AS 1-PIECE = 17 TONS**
- 2' RISER SECTION - 3.75 TONS**
- 3' RISER SECTION (NOT SHOWN) - 5.63 TONS**
- 4' RISER SECTION - 7.5 TONS**
- BASE SECTION W/FLOAT COLLAR & FILLETS - 15.0 TONS**
- 2' VALVE VAULT EXTENSION (NOT SHOWN) - 4.25 TONS**
- 4' VALVE VAULT EXTENSION (NOT SHOWN) - 8.5 TONS**

PATENT PENDING



THIS DOCUMENT IS THE PROPERTY OF OLDCASTLE PRECAST, INC. IT IS SUBMITTED FOR REFERENCE PURPOSES ONLY AND SHALL NOT BE USED IN ANY WAY INJURIOUS TO THE INTERESTS OF SAID COMPANY.
COPYRIGHT © 2011 OLDCASTLE PRECAST, INC. ALL RIGHTS RESERVED.

**ONELIFT PUMP STATION
RC611 TYPICAL LAYOUT DRAWING**

CUSTOMER				
DATE	SALES	DRAWN	ENGINEER	CHECKED
XXXX		KWP	KWP	KWP
DRAWING NUMBER				SHEET
324-XXXXX-001				1 OF
REV. DATE				IN PLACE

REF:
8'φ = 50.26 CF/FT
10'φ = 78.53 CF/FT
RC611 = 62.56 CF/FT
468 Gal/vert. FT



RC611