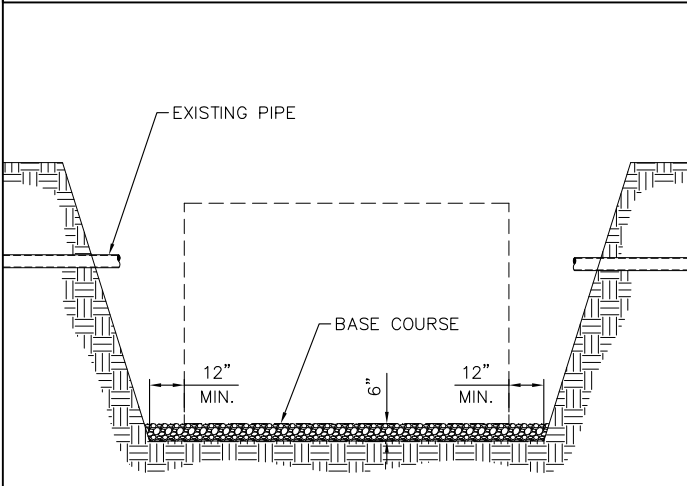
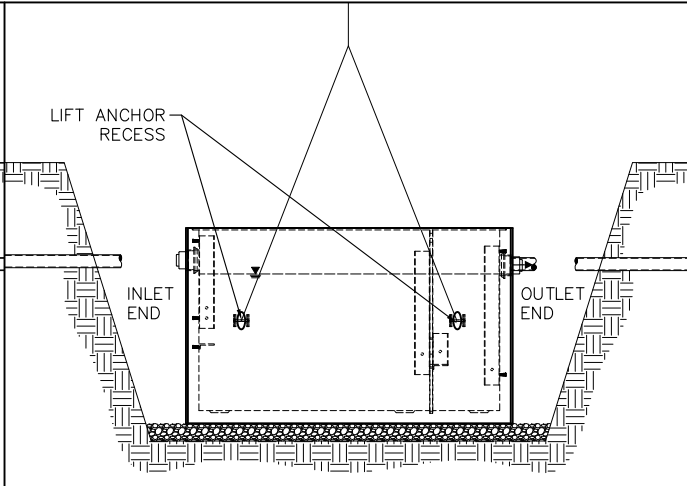


# GRAVITY GREASE INTERCEPTOR (GGI) - INSTALLATION INSTRUCTIONS



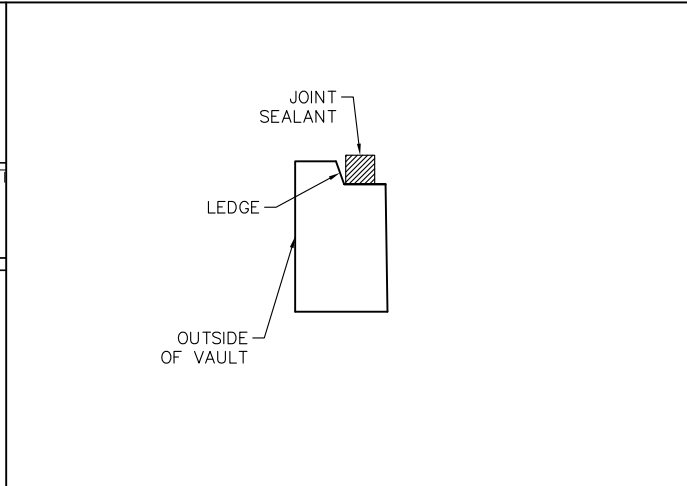
## EXCAVATE

- 1) EXCAVATE HOLE 12" MIN. AROUND OUTSIDE OF INTERCEPTOR (FOLLOW OSHA RECOMMENDATIONS)
- 2) PLACE 6" THICK BASE COURSE
- 3) LEVEL AND COMPACT BASE COURSE



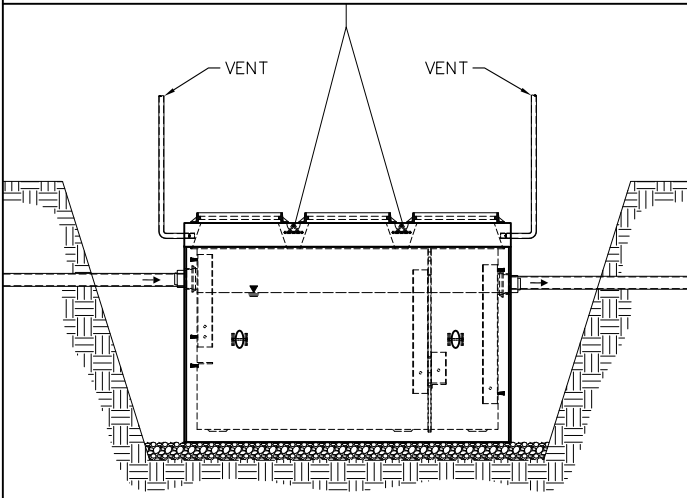
## SET BASE

- 4) SET BASE - CHECK INLET/OUTLET ORIENTATION
- 5) FILL THE LIFT ANCHOR RECESSES WITH GROUT
- 6) CONNECT 4" OR 6" INLET/OUTLET PIPES (PROVIDED BY OTHERS) TO THE FLEXIBLE BOOT SEALS.



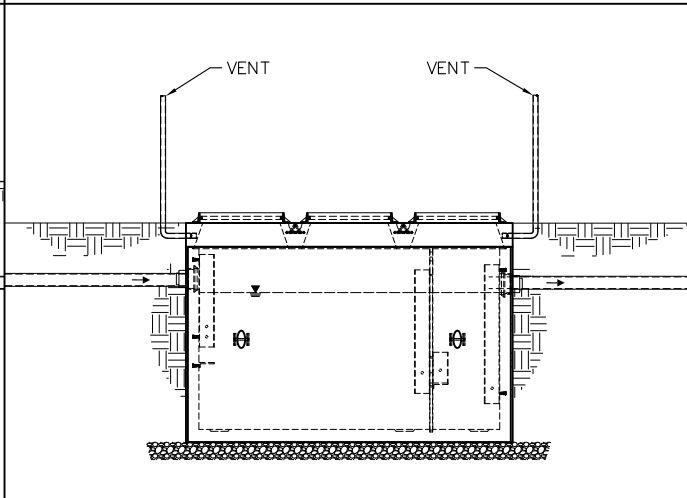
## INSTALL JOINT SEALANT

- 7) INSTALL JOINT SEALANT ON THE BASE KEYWAY AS SHOWN ABOVE. SPLICE THE JOINT SEALANT 12" MIN. AWAY FROM CORNER OF INTERCEPTOR. BUTT ENDS & KNEAD TOGETHER INTO ONE CONTINUOUS STRAND. DO NOT STRETCH.
- 8) SET TOP.



## CONNECT PIPES / VENTS

- 9) CONNECT 2" VENTILATION PIPES (PROVIDED BY OTHERS) THROUGH LID TO OPEN ATMOSPHERE.



## BACKFILL

- 10) BACKFILL VAULT ACCORDING TO ASTM C891
- 11) GRADE RING RISERS-RECOMMENDED NOT TO EXCEED 12" HEIGHT TO MAINTAIN MAXIMUM VISIBILITY.

### Structural Note:

Structural Design assumes HS-20 Loading with 5 ft. of maximum soil cover on top. For soil cover over 5 ft. contact engineering department at Oldcastle Precast.

Ensure adequate bearing surface is provided. (i.e. Level and compact)

All internal components pre-assembled by Oldcastle Precast prior to delivery.

If water-tightness testing is required by the Authority Having Jurisdiction (AHJ) then backfill shall take place prior to the test

| MODEL       | CAPACITY     | HEAVIEST LIFT |
|-------------|--------------|---------------|
| STRATA-1000 | 1,000 Gallon | 12,250 lbs.   |
| STRATA-1500 | 1,500 Gallon | 15,175 lbs.   |

THIS DOCUMENT IS THE PROPERTY OF OLDCASTLE PRECAST, INC. IT IS CONFIDENTIAL, SUBMITTED FOR REFERENCE PURPOSES ONLY, AND SHALL NOT BE USED IN ANY WAY INJURIOUS TO THE INTERESTS OF, OR WITHOUT THE WRITTEN PERMISSION OF OLDCASTLE PRECAST, INC. COPYRIGHT © 2016 OLDCASTLE PRECAST, INC. ALL RIGHTS RESERVED.

REVISED 11-8-16

**Oldcastle Precast**  
7921 Southpark Plaza  
Suite 200 Littleton, CO 80120  
(888)965-3227