

MULTIDUCT™

FAST INSTALLATION

ONE PERSON LIFT

SUPERIOR STRENGTH



SIMPLIFYING
cable protection.



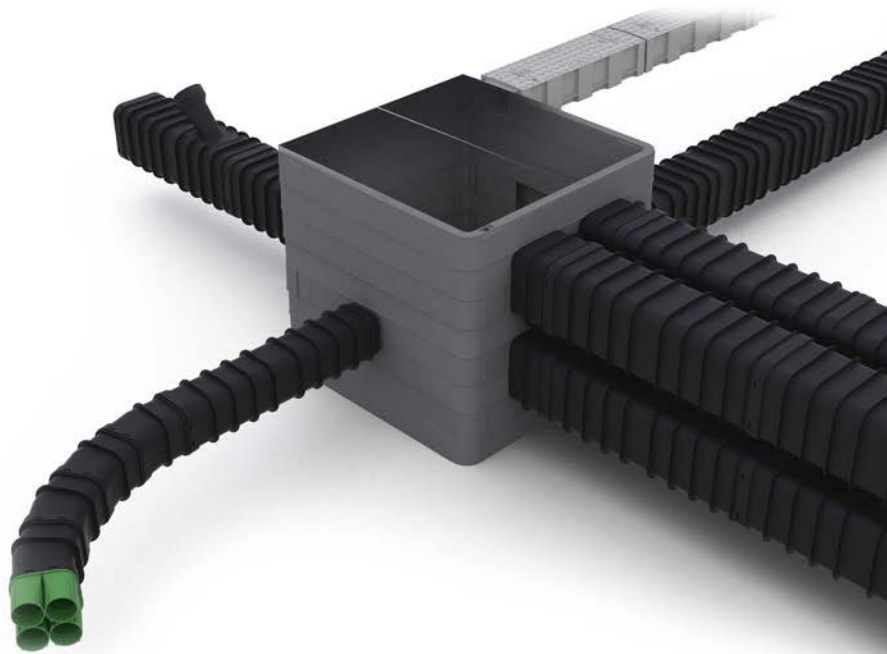
MULTIduct™ cable protection ducting system assembles quickly and easily. Lightweight parts suitable for single person lift and a unique push-fit system provide maximum savings on project time and cost. Requiring shallower burial depths and with greater crush-resistance than conventional methods, MULTIduct™ easily resolves engineering challenges for cable installation. A wide range of accessories provide solutions for many typical installation obstacles.

SUPERIOR

crush-resistance.

Quick connections with 2 degree of flexibility result in the creation of a natural bend that can follow the curvature of a track, road, or tunnel installation. MULTIduct™ combines multiple cable ducts into a single unit with smooth internal walls for easy cable pulling. Units can be stacked without requiring a graded backfill between ducts, reducing excavation and narrower, shallower trenches.

- | Quick and easy push-fit connection
- | 2° natural bend at connection
- | All parts under 40 lbs (25kg)
- | Variety of accessories
- | Stackable for multi-bank installations
- | No concrete or special backfill required



Available MULTIduct™ Units:

- 4 Way
- 4 Way XL
- 6 Way
- 9 Way

Available MULTIduct™ Accessories:

- Angles to accommodate the required bend radius
- Duct adapters for integration with traditional ducting
- Sockets and spigots for joining multiple lengths
- End caps for termination at duct entry points

